

# Integr8tor

Practical automated  
data input and analysis

| ID | HANDLER | ORIGINAL DATA | CUSTOMER | LOCATION         | PROGRESS | PRIO | SUBMIT TIME           | START TIME            | DURATION |
|----|---------|---------------|----------|------------------|----------|------|-----------------------|-----------------------|----------|
| 51 |         | 2530_A.ZIP    | peve     | Quotation Review | Review   | 2    | 2009-02-17 10:03:04.0 | 2009-02-17 10:12:15.0 | 00:53    |
| 50 |         | L14930.ZIP    | Garner   | Input Review     | Review   | 2    | 2009-02-05 08:47:39.0 | 2009-02-05 14:45:52.0 | 00:59    |
| 49 | wbi     | Multi.zip     | wbi      | Quotation Review | Review   | 2    | 2009-01-27 15:20:03.0 | 2009-02-05 16:04:58.0 | 04:07    |
| 48 |         | jdp7101_0.zip | peve     | Input Review     | Review   | 1    | 2009-02-12 10:40:18.0 | 2009-02-12 10:40:31.0 | 00:33    |
| 46 |         | MTS1340GA.ZIP | FVB_cam  | Input Review     | Review   | 2    | 2009-02-12 11:30:34.0 | 2009-02-12 11:32:32.0 | 03:07    |

| FILENAME       | FORMAT  | FUNCTION   | POSITION | POLARITY | SIZE   | FULL PATH   |
|----------------|---------|------------|----------|----------|--------|-------------|
| silktop.gbr    | ger274x | legend     | top      |          | 71557  | C:\MB\vo... |
| masktop.274x   | ger274x | soldermask | top      |          | 56127  | C:\MB\vo... |
| component.274x | ger274x | Cu         | 1        | positive | 238215 | C:\MB\vo... |
| inner2.274x    | ger274x | Cu         | 2        | negative | 55687  | C:\MB\vo... |
| inner3.274x    | ger274x | Cu         | 3        | positive | 125494 | C:\MB\vo... |
| inner4.274x    | ger274x | Cu         | 4        | positive | 86508  | C:\MB\vo... |
| inner5.274x    | ger274x | Cu         | 5        | negative | 58372  | C:\MB\vo... |
| solder.274x    | ger274x | Cu         | 6        | positive | 120425 | C:\MB\vo... |
| maskbot.274x   | ger274x | soldermask | bottom   |          | 20006  | C:\MB\vo... |
| silkbot.gbr    | ger274x | legend     | bottom   |          | 73142  | C:\MB\vo... |

To compete in today's global PCB market every process needs to be faster and more accurate. To win business, you need to respond faster with a quotation and it must be accurate. When you get the order, you need to determine immediately and accurately how you will manufacture the job: short lead-times depend on no down-line surprises. But more accurate quoting and product engineering mean spending more CAM time. Acquiring full data for quotations takes up to 10% of CAM time and acquiring product engineering data up to 30%. At the same time the CAM department is under increasing pressure: production process times cannot be compressed, but CAM times can.

**INTEGR8TOR** provides the solution by automating as far as possible data entry and design analysis in a pre-CAM environment. The result: faster and more accurate information for quoting and product engineering; complete CAM data right at the beginning of the tooling process; and a major increase in total front-end throughput – whatever CAM system you use. Early detection of manufacturing problems.

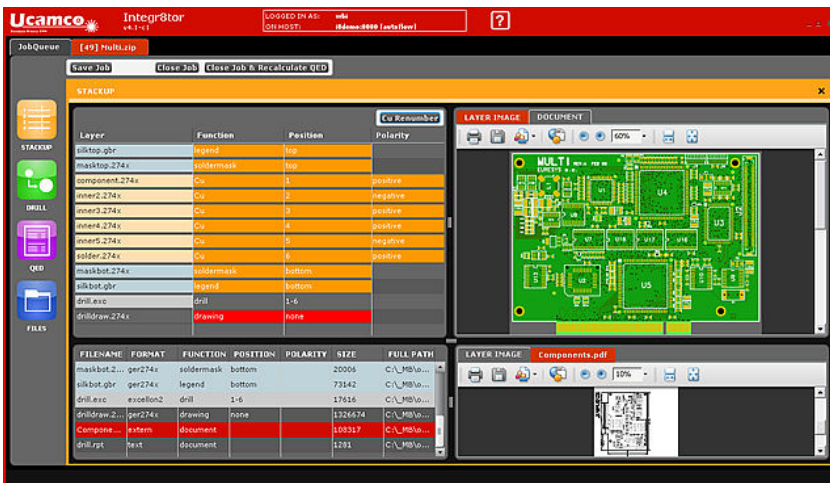
- Automate your data input and engineering analysis for quoting, product engineering and DFM
- Increase productivity, shorten deliveries and lower costs in all CAM environments: Ucam, Genesis, Graphiccode ...
- Enhance your supplier profile

**Ucamco**  
Former Barco ETS

© Ucamco NV  
Bijenstraat 19, B- 9051 St.-Denijs-Westrem  
Tel: +32 (0) 9 2169900 - Fax: +32 (0) 9 2169912  
e-Mail: [info@ucamco.com](mailto:info@ucamco.com)

# Integr8tor

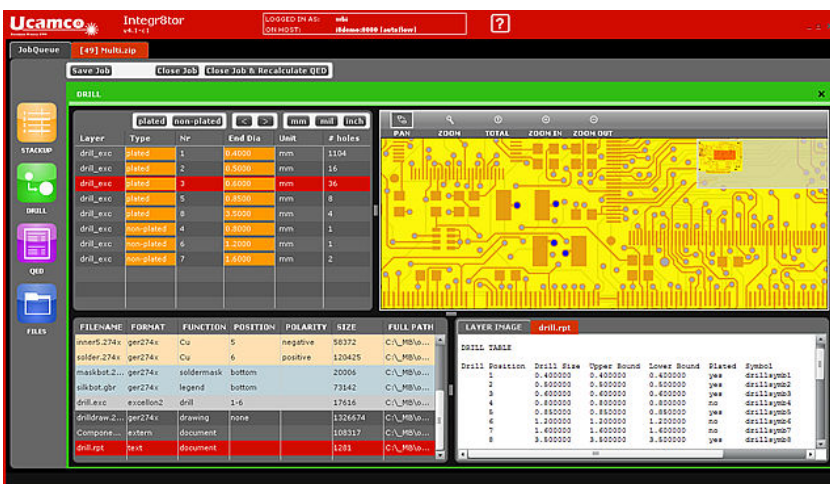
*Practical automated data input and analysis*



**INTEGR8TOR** is a business-process automation solution. It is a client-server application based on XML technology.

**INTEGR8TOR** is a practical solution for real-world data transfer and structuring. Jobs can be submitted through e-mail or using a dedicated client GUI.

AutoInput uses rules and powerful image processing to automatic format recognition, conversion and clean-up of Gerber and ODB++ files to input the CAM data; reconstruct the stackup, registration, plating, polarity and the outline.

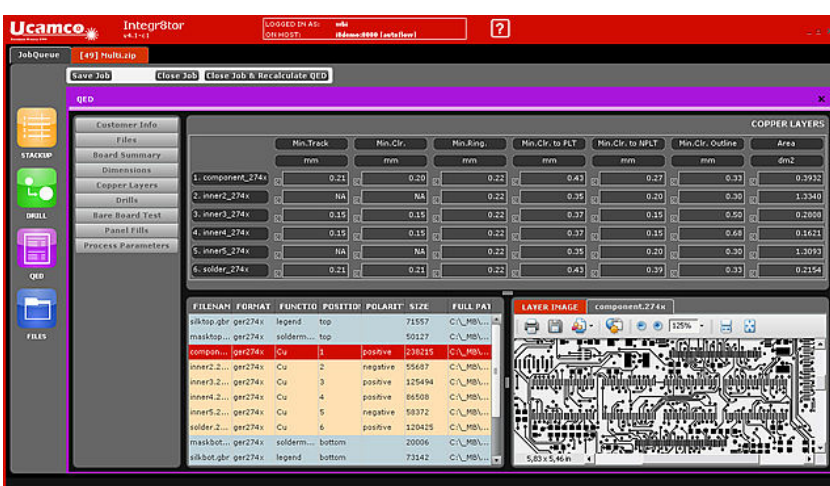


A web-based, fully XML data entry and viewing "page" inputs the product engineering data for a job that can't be acquired from the Gerber data (builds, copper-weights, impedance data, drill tolerances etc). Built-in intelligence guides manual completion.

As soon as the data is imported **INTEGR8TOR** launches Design Analyser in background and builds an internal XML report with quoting and engineering data. From this it generates your human-readable reports and links to quotation/engineering/ERP systems.

## Design-rule, DFM and capability checks

You know within minutes of receiving an order whether you can make the job and where any manufacturing problems may occur.



**Ucamco**  
Former Barco ETS

© Ucamco NV  
Bijenstraat 19, B- 9051 St.-Denijs-Westrem  
Tel: +32 (0) 9 2169900 - Fax: +32 (0) 9 2169912  
e-Mail: [info@ucamco.com](mailto:info@ucamco.com)